

WINDSHIELD PROTECTOR

66-10124 / 66-10125 / 66-10126 / 66-10127 / 66-10128 / 66-10129 / 66-10130

SEIZMIK®

HIGHLIFTER

SEIZMIK™


FALCON RIDGE

 **SNORKEL
YOUR ATV**

SYSTEM 3
OFF-ROAD
Traction. Strength. Style.

EPI
PERFORMANCE



service@seizmik.com



1-866-838-3366
between 9:00 AM and 5:00 PM EST.



www.seizmik.com/customer-support

Parts Available For These Popular Brands and Others

POLARIS

can-am



HONDA

Kawasaki



YAMAHA

Seizmik® is the leader in designing and manufacturing Windshields, Mirrors, Cab Systems, Racks, and other premium accessories engineered to maximize your vehicle's performance and versatility.



Familiarize yourself with all the steps before beginning installation.

INSTALLATION INSTRUCTIONS

1. **POSITION THE PROTECTOR** – Slide the pocket at the bottom of the windshield protector over the bottom edge of your windshield.



2. **ATTACH THE STRAPS** – Take the 2" straps with buckles and wrap them around the windshield frame. If the windshield is fixed, wrap them around the roll cage.

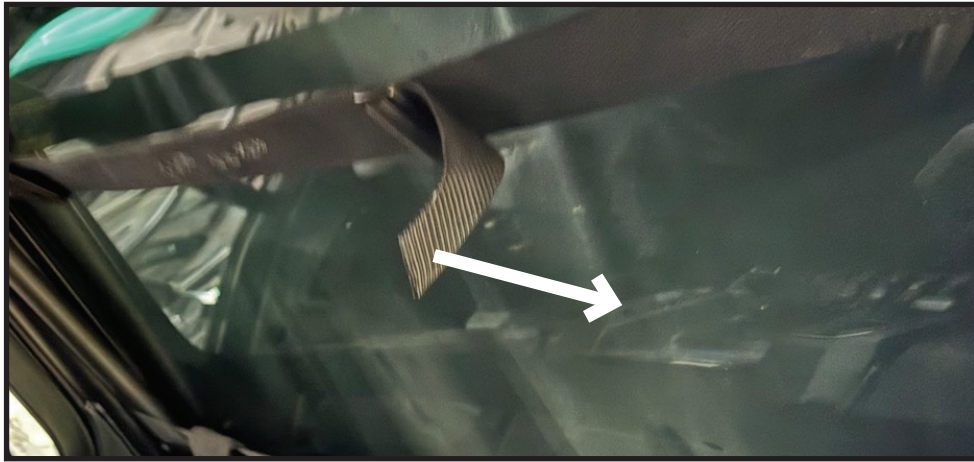


Straps Wrapped
Around Windshield Frame



Straps Wrapped
Around the Roll Cage

- 3. SECURE THE BUCKLES** – Buckle the straps and pull them tightly to secure the protector in place.



- 4. ADJUST AND FINALIZE** – Ensure the cover is centered on the windshield and adjust if necessary. Make sure the foam lies flat against the glass. If your vehicle has a windshield wiper, the cover may be placed over it.



INSTALLATION COMPLETE

1-YEAR WARRANTY

Your purchase is protected by a 1-year warranty against manufacturer defects and workmanship issues.

Need help, missing a part, or have a question? Visit www.seizmik.com/customer-support or email us at service@seizmik.com— we're here to help!